

Things You Should Know About Squirrels



As rodents, squirrels are constantly looking for food and produce many offspring—two litters per year (spring and late summer), with an average of 5-6 per litter. This activity can result in significant damage to buildings and major headaches for business and home owners.



Property Damage

Squirrels will chew through anything. Structural wood, aluminum, electrical wires, insulation, shingles and vents are favourite targets.

FACT: Squirrels must constantly chew in order to keep their incisors from growing too long. Multiply the problem times five babies (pups), and you have a major building damage problem.

Squirrels will build nests in attics, chimneys, vents, roofs and walls. They will use a wide variety of nesting material including insulation, vapour barrier, wood, drywall and paper.

FACT: Squirrel nests tend to be large in relation to their body size and very messy, often extending several feet along a vent pipe or in an attic. Their large dry nests and electrical wire chewing make them a major fire hazard.

Health Risks

Squirrels attract ticks and fleas, especially in warmer weather.

FACT: If the squirrels leave the nest for an extended period, these ticks and fleas will look for new hosts (i.e. people and pets).

Although usually frightened of people, a mother squirrel can be quite aggressive if she perceives danger or is separated from her babies.

FACT: Squirrels are very swift and can move or attack quickly if threatened.

How to Find Them

Squirrels are very active and are often detected because home and business owners hear them scurrying in the attic or walls.

FACT: There can be 30 or more squirrels per square kilometre in urban areas with mature trees.

Look for chewed or damaged soffit, vents and flashings as well as holes along the roof line for potential entry points.

FACT: Squirrels are more adaptable than you might think. They can fit through a hole the size of a baseball (black/grey squirrels) or a golf ball (red squirrels), but a smaller hole can easily be chewed open.

How to Remove Them

Simply patching the entry hole does not work. They will chew through it to regain entry or find their young.

FACT: The most effective method is to remove all the squirrels and completely seal the entire building from further entry.

Killing or capturing the adult likely won't solve the problem, since the babies may still be living in the attic, chimney, walls, roof or vents.

FACT: Squirrels produce an average litter of 4-6 babies twice per year, usually in the spring and late summer. Squirrels usually have 5-6 nest sites in residential areas.



Toll Free 1-877-222-9453
www.humanewildlifecontrol.com



Services Provided by Humane Wildlife Control

Location & Assessment

Our trained technicians will locate the squirrel's entry points and describe or show them to you.

We will then locate all of the squirrel nest sites and assess the most appropriate method of removal based on the age of the babies.

Effective Removal

Our technicians will gain access to the nest and use various hands-on techniques to remove the squirrels (mother and babies).

If babies are present, we may install a special heated baby box near the previous entry point. This will allow the mother to relocate her babies safely.

We will also deodorize the area to deter other squirrels from nesting there.

Guaranteed Exclusion

Our wildlife technicians will seal all the potential openings in your building with heavy gauge screening.

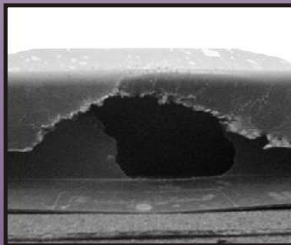
**All materials used to exclude squirrels
are of the highest quality and
are guaranteed for at least three years.**

Why the Humane Approach is Better

Our wildlife technicians are specially trained to remove squirrels and prevent undue stress or injury to the animals. This is also a practical and economical approach. The inhumane killing, trapping or relocation of squirrels is illegal. Removing mother squirrels leaves the babies to die in your building. The removal of carcasses is time consuming, costly and poses a health risk. Our focus on education and prevention makes us a leader in the wildlife control industry.



**Mother relocating
babies**



**Chewed roof vent and
entry hole**



**Squirrel nest and chewed
roof truss in attic**



**Squirrel baby at
4 weeks**



Toll Free 1-877-222-9453

www.humanewildlifecontrol.com